

**AD2**TM
ADVANCED DEFLECTION DESIGN

Firestone



FIRESTONE FARM TIRES WITH AD2™ TECHNOLOGY:

**DESIGNED, ENGINEERED AND BUILT
FOR TODAY'S AGRICULTURE.**

Firestone farm tires with Advanced Deflection Design (AD2) technology represent the “next generation” in performance and productivity – tires specifically designed for today’s farming needs.

These advanced tires are engineered to carry the same load at a lower pressure – or as much as 20% (IF) or 40% (VF) more load at the same pressure – as our equivalent-sized standard radial tires.

AD2 technology helps you get more work done in less time and with less soil compaction.*

*Compared to standard equivalent-sized Firestone radial tires.



MORE LOAD, BIGGER FOOTPRINT, ADDED PERFORMANCE.

AD₂ technology is part of a new class of farm tires that can help improve the productivity of today's heavier equipment.

- **IF- and VF-designated tires can carry more load (up to 20% and 40% respectively)** at the same pressure.*
- **Reduced soil compaction** – increased deflection may result in a larger footprint.
- **Improved traction** – AD₂ technology means less time in the field and reduced fuel consumption.*
- **Improved ride** – a benefit of increased sidewall deflection.



Firestone



ADDED PERFORMANCE, MORE PRODUCTIVITY.

Firestone tires with AD₂ technology are available for specific agricultural applications. And while each is designed with unique advantages, all of them feature the ability to carry the same load at a lower pressure, or carry more load at the same pressure – compared to our equivalent-sized radial tires.

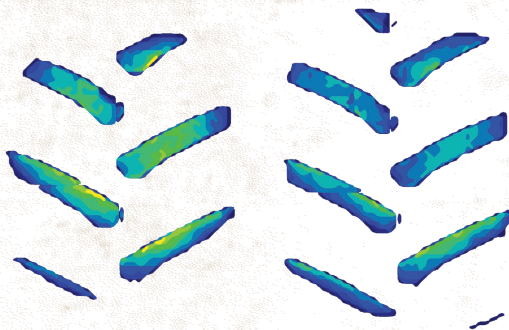
TRACTORS

Firestone tractor tires with AD₂ technology are specifically engineered for today's high-horsepower equipment – delivering more traction, a better ride and reduced compaction. Deep R-1W tread bars that feature longer wear and added traction in wet soils are available in optional tread designs.

SPRAYERS

Firestone sprayer tires with AD₂ technology may help solve many of the load and compaction problems associated with today's larger spraying equipment. Wider tread bars in a specially designed tread pattern may offer smoother "roading" and reduced soil compaction. Rated for 40 mph, too. These tires are available in IF and VF designations.

-- TEKSCAN FOOTPRINT COMPARISON --



STANDARD RADIAL

480/80R50 Radial Deep Tread 23"
9650 lbs. @ 35 psi

IF RADIAL

IF480/80R50 Radial Deep Tread 23"
9650 lbs. @ 23 psi

Firestone tires with AD² technology can carry a given load at a lower pressure than standard equivalent-sized radial tires. Lower pressure gives these tires a larger footprint and helps reduce soil compaction.

IMPLEMENTS

Destination Farm radial implement tires with AD² technology are available in both IF and VF designations. These tires may significantly reduce the soil compaction associated with equivalent-sized bias- and radial-ply truck tires commonly used to carry heavy implements.

HARVEST

Cyclical Field Operation (CFO) harvest tires are specifically built for the exceptional demands of combines and grain carts. Along with the load advantage AD² technology offers, these tires are engineered for the significant load fluctuations unique to harvest equipment.



WE PUT MORE INTO OUR TIRES SO YOU GET MORE OUT OF THEM.

Firestone farm tires with AD2 technology deliver the performance you want with the service and warranty you need. Visit your Certified Firestone Farm Tire Dealer and see for yourself.

- **Proven Firestone tire tread bar design options.**
- **The Certified Firestone Farm Tire Dealer** – specially trained and equipped to handle your in-field service needs.
- **The Firestone Farm Tire Warranty** – one of the best warranties in the farm tire business.
- **Extensive testing for durability and performance** at the Firestone Farm Tire Test Center in Columbiana, Ohio – the only farm tire test facility of its kind in the world.

Firestone





TRACTOR TIRES

Firestone



TRACTOR TIRES WITH AD₂[™] TECHNOLOGY:

**DESIGNED, ENGINEERED AND BUILT
FOR TODAY'S AGRICULTURE.**

Firestone tractor tires with Advanced Deflection Design (AD₂) technology represent the “next generation” in performance and productivity – tires specifically designed for today’s larger, higher-horsepower tractors.

These advanced tires are engineered to carry the same load at a lower pressure – or as much as 20% (IF) to 40% (VF) more load at the same pressure – as our equivalent-sized standard radial tires.

AD₂ technology helps you get more work done in less time and with less soil compaction.*

*Compared to standard equivalent-sized Firestone radial tires.

THE AD₂ ADVANTAGE:

MORE LOAD, BIGGER FOOTPRINT,
ADDED PERFORMANCE.

- **More load capacity** – Firestone tires with AD₂ technology can carry the same load at a lower inflation pressure – or up to 20% (IF) and 40% (VF) more load at the same pressure.*

Tire Size	Material Number	Load Index	Speed Symbol Rating	Design Rim Width (in.)	Overall Width (in.)
TUBELESS					
RADIAL DEEP TREAD 23° – R-1W					
IF800/70R38	378-746	179	B	27.00	31.70
IF480/80R46	004-451	164	B	16.00	19.50
IF520/85R46	378-610	165	B	18.00	20.90
IF480/80R50	374-496	166	B	15.00	19.10
IF480/95R50	375-635	165	B	15.00	19.90
RADIAL ALL TRACTION DT – R-1W					
VF620/75R26	001-603	172	B	20.00	24.50
VF750/65R26	000-556	177	B	25.00	30.30
IF420/90R30	004-450	151	B	14.00	17.80
IF600/70R30	375-703	159	B	20.00	24.40
IF620/75R30	377-539	164	D	21.00	24.60
IF420/85R34	374-513	152	B	14.00	16.30
IF580/80R34	381-585	172	B	20.00	23.50
IF380/80R38	378-627	149	B	12.00	15.30
IF420/85R38	378-882	153	B	14.00	16.70
IF710/70R38	378-219	178	B	25.00	29.60
IF710/70R42	373-697	179	B	25.00	29.40
IF710/75R42	378-542	181	B	25.00	30.50
RADIAL ALL TRACTION 23° – R-1					
IF520/85R34	380-395	168	B	18.00	21.30
IF420/80R46	000-558	167	B	13.00	15.80

*Compared to standard equivalent-sized Firestone radial tires.

- **Reduced soil compaction** – increased deflection may result in a larger footprint and weight distribution.
- **Improved traction** – AD2 technology means less time in the field and reduced fuel consumption.*
- **Improved ride** – a benefit of increased sidewall deflection.
- **Rated up to 40 mph.**

Overall Diameter (in.)	Static Loaded Radius (in.)	Rolling Circum. (in.)	Bar Height 32nds	Bar Height (in.)	Flat Plate (sq. in.)	Max. Load & Inflation (lbs. @ psi)
------------------------	----------------------------	-----------------------	------------------	------------------	----------------------	------------------------------------

TUBELESS

RADIAL DEEP TREAD 23° – R-1W

80.20	34.40	243	74	2.31	686	17100 @ 23
77.50	36.80	242	63	1.97	431	11000 @ 35
80.80	35.50	242	69	2.16	562	11400 @ 23
80.60	36.80	243	63	1.97	431	11700 @ 35
85.90	38.10	258	65	2.03	465	11400 @ 23

RADIAL ALL TRACTION DT – R-1W

62.10	26.60	184	66	2.06	476	13900 @ 35
64.00	27.40	190	67	2.09	534	16100 @ 35
59.00	25.90	178	62	1.94	288	7600 @ 29
62.60	27.20	187	64	2.00	425	9650 @ 29
66.60	28.40	198	67	2.09	403	11000 @ 23
62.40	28.00	187	59	1.84	283	7850 @ 35
70.00	31.20	209	73	2.28	415	13900 @ 29
62.80	28.80	187	57	1.78	230	6950 @ 35
66.10	29.70	198	59	1.84	297	8050 @ 29
76.20	33.60	227	74	2.31	580	16500 @ 35
80.20	35.30	240	74	2.31	590	17100 @ 35
84.40	37.40	253	77	2.41	672	18200 @ 35

RADIAL ALL TRACTION 23° – R-1

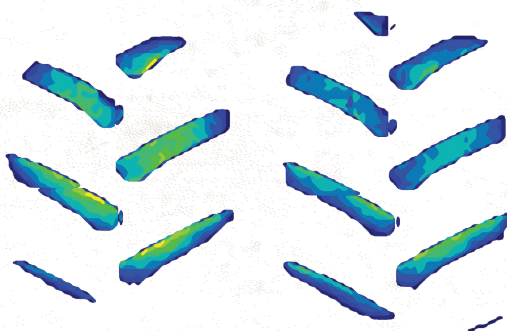
69.00	30.00	202	52	1.63	336	12300 @ 41
72.30	33.20	218	49	1.53	303	12000 @ 58



MORE LOAD, LESS TIME IN THE FIELD, GREATER FUEL SAVINGS.*

AD₂ technology is part of a new class of farm tires that can help improve the productivity of today's higher-horsepower tractors. AD₂ technology helps transfer the horsepower to the ground and helps carry the additional load.

-- TEKSCAN FOOTPRINT COMPARISON --



STANDARD RADIAL
480/80R50 Radial Deep Tread 23"
9650 lbs. @ 35 psi

IF RADIAL
IF480/80R50 Radial Deep Tread 23"
9650 lbs. @ 23 psi

IF tractor tires can carry a given load at a lower pressure than standard equivalent-sized radial tractor tires. Lower pressure gives these tires a larger footprint and helps reduce soil compaction.

*Compared to standard equivalent-sized Firestone radial tires.

WE PUT MORE INTO OUR TIRES SO YOU GET MORE OUT OF THEM.

Firestone tractor tires with AD² technology deliver the performance you want with the service and warranty you need. Visit your Certified Firestone Farm Tire Dealer and see for yourself.

- **Proven Firestone tire tread bar design options.**
- **The Certified Firestone Farm Tire Dealer** – specially trained and equipped to handle your in-field service needs.
- **The Firestone Farm Tire Warranty** – one of the best warranties in the farm tire business.
- **Extensive testing for durability and performance** at the Firestone Farm Tire Test Center in Columbiana, Ohio – the only farm tire test facility of its kind in the world.
- **Made in the U.S.A.** – Des Moines, Iowa.

Firestone

BRIDGESTONE AMERICAS TIRE OPERATIONS, LLC
AGRICULTURAL TIRE DIVISION



WARRANTY

RADIAL TIRES

LIMITED WARRANTY
FOR FIRESTONE TRACTOR AGRICULTURAL TIRES

Firestone

FirestoneAg.com

LIMITED WARRANTY

FOR FIRESTONE TRACTOR AGRICULTURAL TIRES

TIRES COVERED

This Limited Warranty covers original-tread Firestone brand radial agricultural tires purchased or manufactured after January 1, 2009, (except tires made for or used in pulling contests) if they are used in normal agricultural service. It does not cover tires marked "NO ADJ" or "NA" (non-adjustable), or tires not containing the Firestone serial number. Tires branded DT (damaged tire) are not adjustable for appearance. Tires are adjustable for ride-related conditions only during the first six months of service and up to 1/32nd of an inch of treadwear.

Reference the Firestone Warranty Brochure or visit Commercial.Firestone.com/en_us/warranty for full details.

PERFORMANCE REMINDER

Overloading and incorrect air pressure are two of the greatest causes of premature tire removal. For the best performance possible, select the proper design, size and ply-rated tires for your equipment and operate the tires at the inflation pressure required to carry the working load. Detailed load and inflation tables are included in the Firestone Farm Tire Data Book and at FirestoneAg.com.

PROPER TIRE SIZES

Tire sizes and ratings are dictated by vehicle geometry, weight and power. Before changing tire sizes, be sure to check with the equipment manufacturer or dealer. Tire measurements and load-carrying capacities for all Firestone agricultural tires are shown in the Firestone Farm Tire Data Book and at FirestoneAg.com. These measurements are especially important when matching front and rear sizes.

Have a technical question? Contact Field Engineering:

1-800-TIRE ENG (847-3364)

Need additional information?

FirestoneAg.com

Copyright © 2017 Bridgestone Americas Tire Operations, LLC



SPRAYER TIRES

Firestone



SPRAYER TIRES WITH AD₂[™] TECHNOLOGY:

**DESIGNED, ENGINEERED AND BUILT
FOR TODAY'S AGRICULTURE.**

Firestone sprayer tires with Advanced Deflection Design (AD₂) technology are engineered to deliver a new level of performance and productivity for high-volume equipment.

Available in both IF and VF designations, Firestone sprayer tires with AD₂ technology are engineered to carry a given load at a lower pressure than conventional radial sprayer tires. They also feature an application-specific tread design that includes wider bars for less compaction, a curved design for a smoother ride and deeper R-1W tread bars for longer wear.

Along with added performance in the field, they are rated for faster speeds on the road. That means the Firestone AD₂ sprayer tires can help you get more done in less time than standard sprayer tires.



TIRES SPECIFICALLY DESIGNED FOR HIGH-CLEARANCE, HIGH-VOLUME SPRAYERS.

Firestone sprayer tires with AD2 technology were designed from the ground up to meet the unique needs of crop protection and fertilizer applicators. Our sprayer-specific tire and tread design deliver added performance benefits compared to equivalent-sized standard radial tires:

- **IF- and VF-designated tires can carry more load (up to 20% and 40% respectively) at the same pressure,* or**
- **They can carry the same load at a lower pressure***

RADIAL ALL TRACTION RC – R-1W

Tire Size	Material Number	Load Index	Speed Symbol Rating	Design Rim Width (in.)	Overall Width (in.)	Overall Diameter (in.)
TUBELESS						
IF380/90R46	000-629	168	D	13.00	15.70	73.30
VF380/90R46	380-412	173	D	13.00	15.70	73.30
IF380/105R50	000-905	177	D	13.00	15.90	80.70
VF380/105R50	380-429	179	D	13.00	16.20	80.70

*Compared to standard equivalent-sized Firestone radial sprayer tires.



- **Wider tread bars for improved distribution of ground pressure from the bar face**
- **Curved bar design for a smoother ride**
- **Reduced soil compaction**
- **Improved traction**
- **Rated up to 40 mph**
- **20% deeper R-1W tread bars for longer wear and added performance in wet soils**

Static Loaded Radius (in.)	Rolling Circum. (in.)	Bar Height 32nds	Bar Height (in.)	Flat Plate (sq. in.)	Max. Load & Inflation (lbs. @ psi)
TUBELESS					
33.70	220	57	1.78	273	12300 @ 64
33.40	220	57	1.78	303	14300 @ 64
37.30	244	59	1.84	327	16100 @ 70
37.30	244	59	1.84	327	17100 @ 64

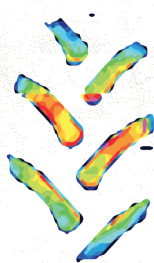




THE AD₂ ADVANTAGE: MORE LOAD, BIGGER FOOTPRINT, ADDED PERFORMANCE.

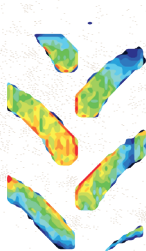
Firestone sprayer tires with AD₂ technology are available in both IF and VF designations – both offer superior performance compared to our standard radial tires. AD₂ is a new class of farm tires that helps improve the productivity of today's self-propelled sprayers.

-- TEKSCAN FOOTPRINT COMPARISON --



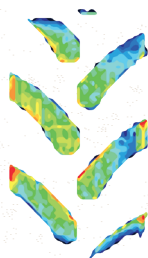
STANDARD RADIAL

380/90R46 Radial 9000
10500 lbs. @ 64 psi



IF RADIAL

IF380/90R46 Radial All Traction RC
12300 lbs. @ 64 psi



VF RADIAL

VF380/90R46 Radial All Traction RC
12300 lbs. @ 49 psi

Both IF and VF sprayer tires can carry given loads at a lower pressure than standard equivalent-sized radial sprayer tires. Lower pressure gives these tires a larger footprint and helps reduce soil compaction.



WE PUT MORE INTO OUR TIRES SO YOU GET MORE OUT OF THEM.

Firestone sprayer tires with AD2 technology deliver the productivity you want with the service and warranty you need. Visit your Certified Firestone Farm Tire Dealer and see for yourself.

- **The Certified Firestone Farm Tire Dealer** – specially trained and equipped to handle your in-field service needs.
- **The Firestone Farm Tire Warranty** – one of the best warranties in the farm tire business.
- **Extensive testing for durability and performance** at the Firestone Farm Tire Test Center in Columbiana, Ohio – the only farm tire test facility of its kind in the world.
- **Made in the U.S.A.** – Des Moines, Iowa.

Firestone

BRIDGESTONE AMERICAS TIRE OPERATIONS, LLC
AGRICULTURAL TIRE DIVISION



WARRANTY

SPRAYER TIRES

LIMITED WARRANTY
FOR FIRESTONE SPRAYER AGRICULTURAL TIRES

Firestone

FirestoneAg.com

LIMITED WARRANTY

FOR FIRESTONE SPRAYER AGRICULTURAL TIRES

TIRES COVERED

This Limited Warranty covers original-tread Firestone brand radial agricultural tires purchased or manufactured after January 1, 2009, (except tires made for or used in pulling contests) if they are used in normal agricultural service. It does not cover tires marked "NO ADJ" or "NA" (non-adjustable), or tires not containing the Firestone serial number. Tires branded DT (damaged tire) are not adjustable for appearance. Tires are adjustable for ride-related conditions only during the first six months of service and up to 1/32nd of an inch of treadwear.

Reference the Firestone Warranty Brochure or visit Commercial.Firestone.com/en_us/warranty for full details.

PERFORMANCE REMINDER

Overloading and incorrect air pressure are two of the greatest causes of premature tire removal. For the best performance possible, select the proper design, size and ply-rated tires for your equipment and operate the tires at the inflation pressure required to carry the working load. Detailed load and inflation tables are included in the Firestone Farm Tire Data Book and at FirestoneAg.com.

PROPER TIRE SIZES

Tire sizes and ratings are dictated by vehicle geometry, weight and power. Before changing tire sizes, be sure to check with the equipment manufacturer or dealer. Tire measurements and load-carrying capacities for all Firestone agricultural tires are shown in the Firestone Farm Tire Data Book and at FirestoneAg.com. These measurements are especially important when matching front and rear sizes.

Have a technical question? Contact Field Engineering:

1-800-TIRE ENG (847-3364)

Need additional information?

FirestoneAg.com



CYCLICAL FIELD OPERATION HARVEST TIRES

Firestone



CFO HARVEST TIRES WITH AD₂TM TECHNOLOGY:

**DESIGNED, ENGINEERED AND BUILT
FOR TODAY'S HARVEST EQUIPMENT.**

Firestone CFO harvest tires with Advanced Deflection Design (AD₂) technology represent the “next generation” of performance and productivity for harvest equipment – tires specifically designed for the exceptional demands of combines and grain carts.

CFO stands for Cyclical Field Operation. It means these tires can carry more load than equivalent-sized conventional radial tires and are engineered for the extreme load cycles that are part of the harvest season.

It means you can get more work done in less time and with less soil compaction than standard radial tires.*

*Compared to standard equivalent-sized Firestone radial harvest tires.



SPECIFICALLY DESIGNED FOR HARVEST EQUIPMENT.

Firestone CFO harvest tires with AD2 technology were built from the ground up to meet your harvest equipment needs. Our harvest-specific tire and tread design deliver added performance benefits compared to equivalent-sized standard radial tires:

- **Up to 20% more load-carrying capacity,* or**
- **Carries the same load at a lower pressure***

Tire Size	Material Number	Load Index	Speed Symbol Rating	Design Rim Width (in.)	Overall Width (in.)
TUBELESS					
RADIAL ALL NON-SKID (ANS) – R-3					
IF800/60R32CFO	000-911	181	B	27.00	33.10
RADIAL ALL TRACTION 23° – R-1					
IF900/60R32CFO	000-903	182	B	30.00	36.80
IF900/60R32CFO	003-149	188	B	30.00	37.00
IF520/85R42CFO	000-560	169	B	18.00	22.00
RADIAL DEEP TREAD 23° – R-1W					
IF1250/50R32CFO	380-446	201	B	44.00	50.60
IF800/70R38CFO	000-928	184	B	27.00	33.20
IF520/85R42CFO	000-921	169	B	18.00	22.40
IF580/85R42CFO	003-148	178	B	20.00	23.90
VF580/85R42CFO	007-123	183	B	20.00	23.90
RADIAL CHAMPION SPADE GRIP R-2					
IF520/85R42CFO	003-170	169	B	18.00	22.50

*Compared to standard equivalent-sized Firestone radial harvest tires.



- **Reduced soil compaction**
- **Engineered for extreme load cycles**
- **Improved traction**

Overall Diameter (in.)	Static Loaded Radius (in.)	Rolling Circum. (in.)	Bar Height 32nds	Bar Height (in.)	Flat Plate (sq. in.)	Max. Load & Inflation (lbs. @ psi)
------------------------	----------------------------	-----------------------	------------------	------------------	----------------------	------------------------------------

TUBELESS

RADIAL ALL NON-SKID (ANS) – R-3

69.60	30.7	210	37	1.16	477	18200 @ 46
-------	------	-----	----	------	-----	------------

RADIAL ALL TRACTION 23° – R-1

74.60	32.9	226	61	1.91	625	18700 @ 35
75.60	33.2	226	61	1.91	625	22000 @ 46
76.50	34.4	228	52	1.63	1086	12800 @ 35

RADIAL DEEP TREAD 23° – R-1W

82.50	34.9	240	74	2.31	687	32000 @ 46
80.20	36.6	243	74	2.31	452	19800 @ 35
76.30	34.4	228	69	2.16	452	12800 @ 35
80.90	36.6	243	72	2.25	450	16500 @ 41
80.90	36.6	241	72	2.25	450	19300 @ 41

RADIAL CHAMPION SPADE GRIP R-2

77.40	34.90	230	105	3.28	470	12800 @ 35
-------	-------	-----	-----	------	-----	------------

Firestone



THE AD₂ ADVANTAGE:

MORE LOAD, BIGGER FOOTPRINT,
LESS COMPACTION.*

Firestone CFO harvest tires are built with the IF designation – offering superior performance compared to our equivalent-sized standard radial tires. AD₂ is a new class of farm tires that helps improve the productivity of today's harvest equipment.

CFO harvest tires can carry up to 20% more load at the same pressure, or the same load at a lower pressure.*

-- CFO TEKSCAN FOOTPRINT --



IF CFO harvest tires can carry a given load at a lower pressure than standard equivalent-sized radial harvest tires. Lower pressure gives these tires a larger footprint and helps reduce soil compaction.

IF CFO RADIAL
IF1250/50R32CFO Deep Tread 23"
34100 lbs. @ 23 psi

*Compared to standard equivalent-sized Firestone radial harvest tires.



WE PUT MORE INTO OUR TIRES SO YOU GET MORE OUT OF THEM.

Firestone AD2 CFO harvest tires deliver the productivity you want with the service and warranty you need. Visit your Certified Firestone Farm Tire Dealer and see for yourself.

- **The Certified Firestone Farm Tire Dealer** – specially trained and equipped to handle your in-field service needs.
- **The Firestone Farm Tire Warranty** – one of the best warranties in the farm tire business.
- **Extensive testing for durability and performance** at the Firestone Farm Tire Test Center in Columbiana, Ohio – the only farm tire test facility of its kind in the world.
- **Made in the U.S.A.** – Des Moines, Iowa.

Firestone

BRIDGESTONE AMERICAS TIRE OPERATIONS, LLC
AGRICULTURAL TIRE DIVISION



WARRANTY

CFO HARVEST TIRES

LIMITED WARRANTY
FOR FIRESTONE CFO HARVEST AGRICULTURAL TIRES

Firestone

FirestoneAg.com

LIMITED WARRANTY

FOR FIRESTONE CFO HARVEST AGRICULTURAL TIRES

TIRES COVERED

This Limited Warranty covers original-tread Firestone brand radial agricultural tires purchased or manufactured after January 1, 2009, (except tires made for or used in pulling contests) if they are used in normal agricultural service. It does not cover tires marked "NO ADJ" or "NA" (non-adjustable), or tires not containing the Firestone serial number. Tires branded DT (damaged tire) are not adjustable for appearance. Tires are adjustable for ride-related conditions only during the first six months of service and up to 1/32nd of an inch of treadwear.

Reference the Firestone Warranty Brochure or visit Commerical.Firestone.com/en_us/warranty for full details.

PERFORMANCE REMINDER

Overloading and incorrect air pressure are two of the greatest causes of premature tire removal. For the best performance possible, select the proper design, size and ply-rated tires for your equipment and operate the tires at the inflation pressure required to carry the working load. Detailed load and inflation tables are included in the Firestone Farm Tire Data Book and at FirestoneAg.com.

PROPER TIRE SIZES

Tire sizes and ratings are dictated by vehicle geometry, weight and power. Before changing tire sizes, be sure to check with the equipment manufacturer or dealers. Tire measurements and load-carrying capacities for all Firestone agricultural tires are shown in the Firestone Farm Tire Data Book and at FirestoneAg.com. These measurements are especially important when matching front and rear sizes.

Have a technical question? Contact Field Engineering:

1-800-TIRE ENG (847-3364)

Need additional information?

FirestoneAg.com

Copyright © 2017 Bridgestone Americas Tire Operations, LLC

Firestone

FirestoneAg.com